

Clifton North

Area Committee Executive Summary

Unofficial December 2012 Data

Introduction

Clifton North ward incorporates the north part of Glapton Lane of the Clifton Estate to its boundary with Rushcliffe Borough Council and the River Trent. There are four distinct neighbourhoods in the ward Clifton Estate, Clifton Grove Estate, Silverdale and Wilford.

The Ward has a population of 13,066 (2010) and is predominately white - 92.9%. Has a higher proportion of older people (17.34% people aged 65 & over (males) or 60 & over (females) compared to the City (11.32%). Compared to the City, the ward has a lower proportion of student households, just 1.5%, a third of the Nottingham average of 4.1%.

The positives aspects of the ward are:-

- Distinct Community identity for Wilford, Silverdale, Clifton Grove and Clifton Estate.
- Good mixture of housing and new housing development at 'old' Becket School site
- Large open green areas with a number of parks improved over the years (Green Flag status for Clifton Playing Field)
- Second largest Skatepark in England
- 3 Primary schools
- 2 secondary schools
- New Tram Line
- Leisure Centre is well used following recent improvements

The issues and concerns of the ward are:-

- Concerned about Litter and fly tipping
- Car parking around Sunninghill / Rivergreen area
- Displaced parking as result of Workplace Parking Levy in Wilford
- Raise awareness of services available for young people
- Pursue ASB process, ASBO's, housing tenancy action and prosecution
- More patrolling of 'hot spot' areas
- Raise awareness of services available to young people
- Support to local people to get on training courses, in getting into employment and exploring self-employment options
- Scope training needs of local people – post or implement programmes to suit
- Raise awareness on smoking, cancer, mental health, physical activity and obesity and encourage local people to make a pledge to take action to improve their health
- Wilford & Silverdale areas access to GP - many citizens use GP services in the Rushcliffe Borough area.

Ward priorities – Progress update

Theme	Priority	Key Actions	Outcome	Lead
SAFER	<p>ASB across the estate linked to low level crime (criminal damage etc.)</p> <p>Groups of youths hanging around</p> <p>Increase in Neighbourhood Watch and Neighbourhood Alert</p> <p>Reduce number of Serious Acquisitive Offences (burglary, robbery & auto-crime)</p>	<p>High visibility patrols and intervention With younger groups. Plan being prepared by PC 170 Wallis to target problem youths</p> <p>Raise awareness of services available for young people</p> <p>Sharing Alerts with local residents. Better use of priority setting meetings to raise awareness</p> <p>Intelligence lead operations, management of offenders, better liaison with the community. Better advertising of success stories to build confidence of the community</p>		Neighbourhood Policing Team
NEIGHBOURHOODS	<p>Parking issues</p> <p>Litter, Bulky waste, fly-tipping</p> <p>Dog fouling</p>	<p>Residents parking scheme now operating in Sunninghill / Rivergreen area. Parking bays on Glapton Lane provided and need to continue further on Glapton Lane. Parking issues in Wilford currently explored.</p> <p>Fly-tipping hotspots being cleared and notices being served on private land</p> <p>At least 2 x Dog fouling operations held every month</p>	<p>FPN's to dog owners</p>	<p>Highways & Neighbourhood Services</p> <p>Neighbourhood Services</p> <p>Community Protection 4</p>

Ward priorities – Progress update

Theme	Priority	Key Actions	Outcome	Lead
FAMILIES	<p>Healthy weights in children</p> <p>Need to raise profile of Family & Community Team amongst citizens and across the area</p>	<p>Delivery rolling programme of weaning sessions and preventive workshops across Clifton North and South for parents and young people</p> <p>Awareness raising events in Clifton Cornerstone</p> <p>To hold 2 open/drop in sessions for the public and partners.</p> <p>To attend and delivery short presentation at TRA's public meetings</p>	<p>50 Parents / young people to have attended weaning and Preventative Workshops</p> <p>Increased uptake of services by Citizens</p>	Children & Families Team
HEALTH	<p>Encourage healthier lifestyles</p> <ol style="list-style-type: none"> 1. Obese Children 2. Mental Health 3. Smoking 4. Physical Activity 	<p>Changemakers, Clifton HWAG and others working on obesity, smoking, healthier lifestyles</p> <p>Develop awareness of the harmful effects of the themes and promote services and opportunities</p>	<p>Over 50's Event at Clifton Leisure Centre (Nov)</p>	Decade of better Health
WORKING	<p>Training for local people</p> <p>Jobs for young adults</p> <p>Jobs and training Fairs</p>	<p>Signpost local people to City Employment Hub</p>		<p>Employment Team</p> <p style="text-align: right;">5</p>

Community Engagement

Events Delivered

Event	Lead Partners	Date/Time	Venue
Changes to Council Tax Benefits - consultation	Nottingham City Council	17/09/12 & 18/09/12	Clifton Cornerstone
Older Persons Event	NHS Health Promotion	26/11/12 10am to 2pm	Clifton Leisure Centre
Budget Consultation	Nottingham City Council	03/12/12 6.30pm	Clifton Cornerstone
Christmas Lights Switch-on	Nottingham City Council	07/12/12 Lights switch 4.45pm	Clifton District Centre

Future Events and Activities Planned

Event	Lead Partners	Date/Time	Venue
The Leader Listens	Locality Management	29/01/13 5pm	Lark Hill Village
Have your Say & Budget Consultation	Locality Management & Police	31/01/13 7.00pm	Clifton Cornerstone

Community Engagement

Ward Walks

Area/Estate	Date/Time	Meeting Point
Wilford	22/01/13 - 10.00am	Outside Co-op, Wilford Lane
Rivergreen	5/03/13 - 10.00am	Clifton Cornerstone

Community Meetings

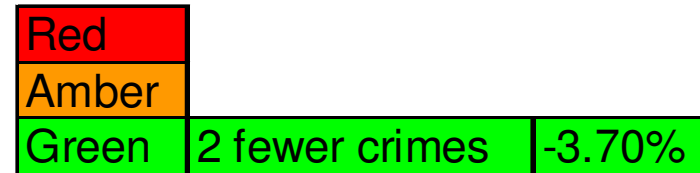
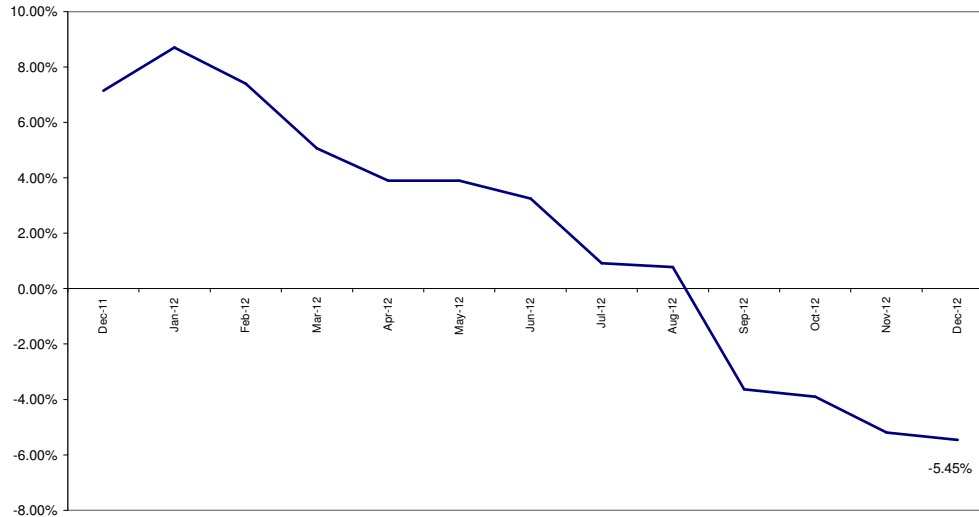
Group	Date	Venue
Silverdale Community Association	12//02/12 – 7.30pm	Silverdale Community Centre
Wilford Community Group	18/02/12 – 7.00pm	Wilford Social Club
Silverdale Community Association	12/03/12 - 7.00pm	Silverdale Community Centre
Wilford Community Group	18/03/12 – 7.30pm	Wilford Social Club
Wilford Community Group	15/04/12 – 7.30pm	Wilford Social Club

Finance

- **Ward Councillor Budgets**
Total amount allocated this period £ 3,552
Budget remaining unallocated £ 23,659 (inc. of 2012-2013 allocation)
- **Area Capital Fund**
Total amount allocated this period £ 10,506
Budget remaining unallocated £ 10,026 (inc. of 2011-2013 allocation)
- **Others – Section 106, NCH Environmentals, Other Funding**
None this period

Crime

All Crime in Clifton North -
% Change over 2010/11 Baseline (Rolling 12 Month)

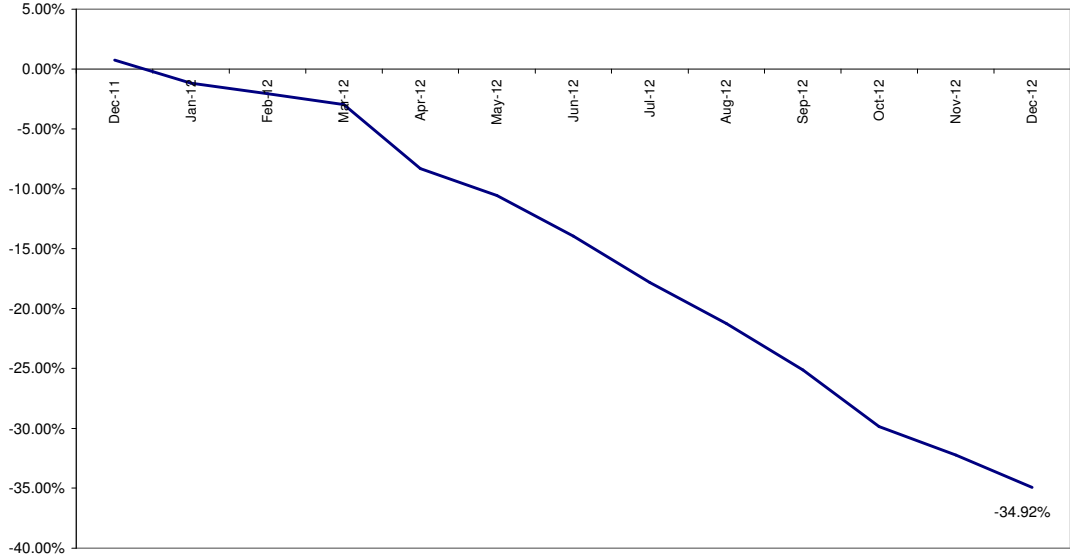


*Refers to December 2012 compared to December 2011

- In December 2012 (compared to December 2011) All Crime in Clifton North was down by 3.7% (2 crimes, see above RAG rating).
- The above graph compares All Crime in Clifton North over the previous 12 months to a 2010/11 baseline. On this measure performance continues to improve, but reductions are proportionally less than they have been in previous months.
- Year to date (compared to the corresponding period last year) All Crime in Clifton North is down 13.37%.

All ASB

All ASB in Clifton North -
% Change over 2010/11 Baseline (Rolling 12 Month)



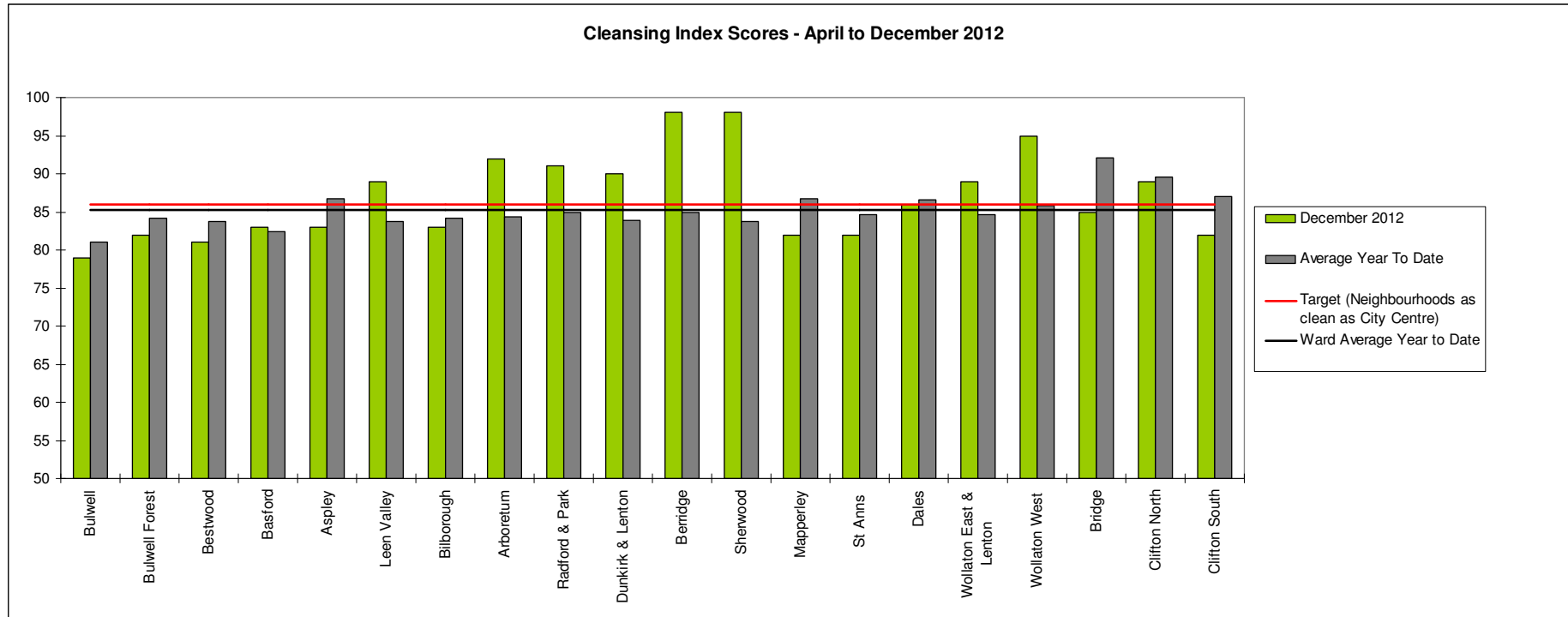
Red		
Amber		
Green*	18 fewer calls	-48.65%

*Refers to December 2012 compared to December 2011

- In December 2012 (compared to December 2011) All ASB in Clifton North was down 48.65% (18 calls, see above RAG rating).
- The above graph compares volume of All ASB over the previous 12 months to a 2010/11 baseline. The graph highlights the steadily improving performance of Clifton North on this measure.
- Year to date (compared to the corresponding period last year) All ASB in Clifton North is down 41.99%.

Cleanliness Index

This graph shows the position of your ward compared to other Wards



The “neighbourhood as clean as the city centre” benchmark target on cleanliness is to achieve a score of 86% in every ward. The 86% target is shown in red in the above graph.

To calculate the Cleanliness Index (CI) an agreed number of transects are surveyed across an area covering a range of land types. Each site surveyed is awarded a cleanliness grade based on a 7 point scale from A to D where Grade A: – no litter, and Grade D: - heavily littered. The maximum possible score of 100 is achieved when all sites achieve Grade A.

The Code of Practice for Litter and Refuse (COPLAR) requires councils to strive to reach an ‘acceptable’ standard of cleanliness (grade B or better) across the Council area. Grade A is the ultimate goal and is how a site should be immediately after sweeping but is almost impossible to maintain for any length of time. For example, a grade A site is completely free of litter – one cigarette butt takes it down to B+.

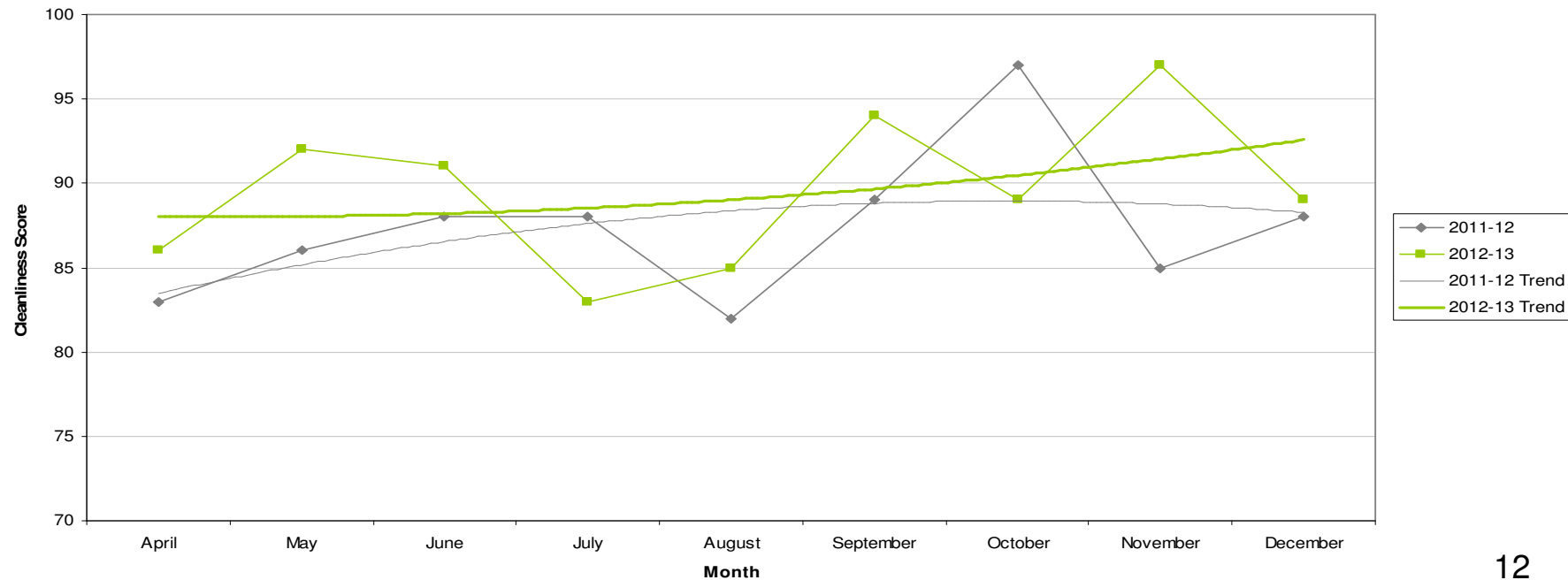
To achieve the manifesto commitment of Neighbourhoods as clean as the City Centre a target of 86 is required as that was the CI for the City Centre in May 2011. To give some context if all areas surveyed achieved a grade ‘B’ standard, this would equate to a cleanliness index of 67.

Cleanliness Index

Cleanliness Index Score	89
Performance compared to previous year	↗
Performance compared to neighbourhoods target of 86	↗

- All data refers to a comparison with the previous year's month
- It is proposed that performance over time graphs be used for each indicator
- Historic data for comparison is not available for dog fouling

Cleanliness Index

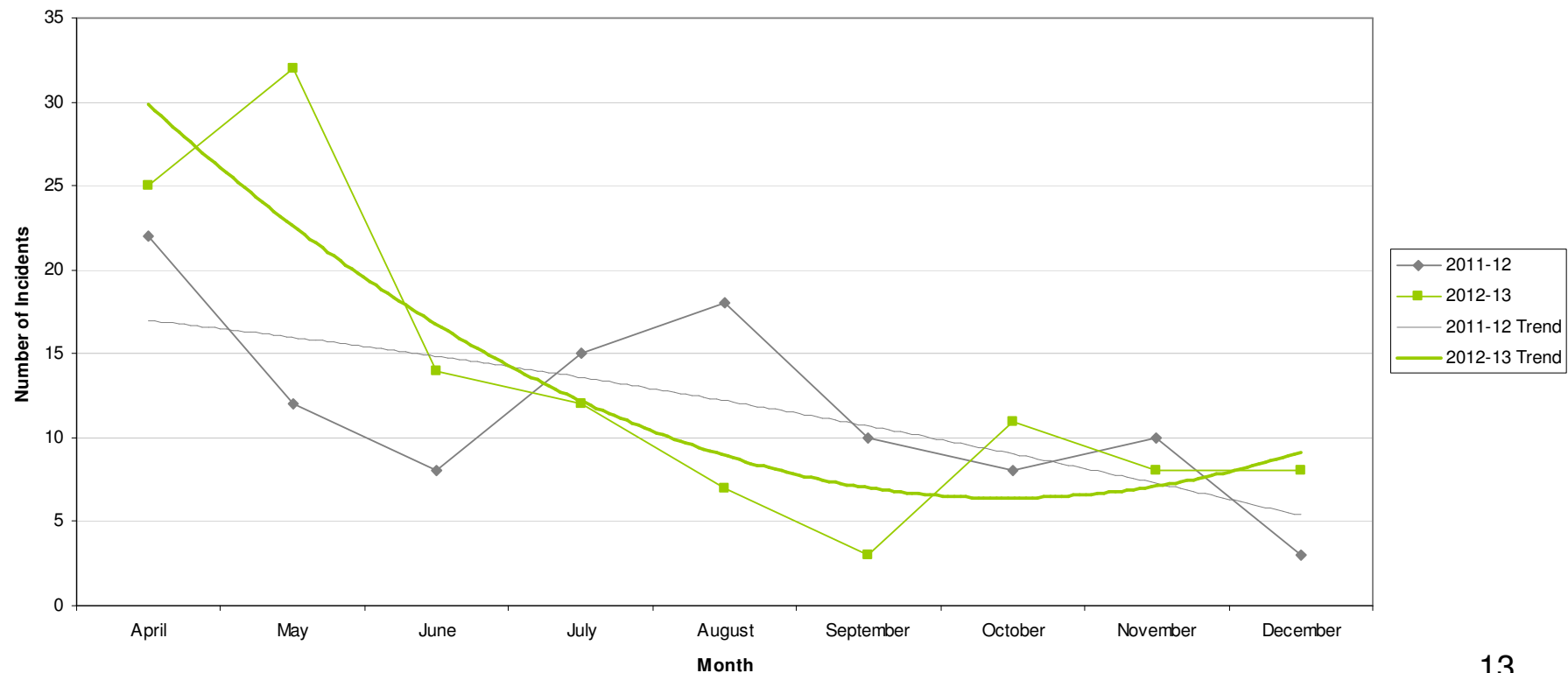


Graffiti Reports

RED	8 incidents	Increase of 5
AMBER		
GREEN		

- All data refers to a comparison with the previous year's month
- It is proposed that performance over time graphs be used for each indicator
- Historic data for comparison is not available for dog fouling

Incidents of Graffiti

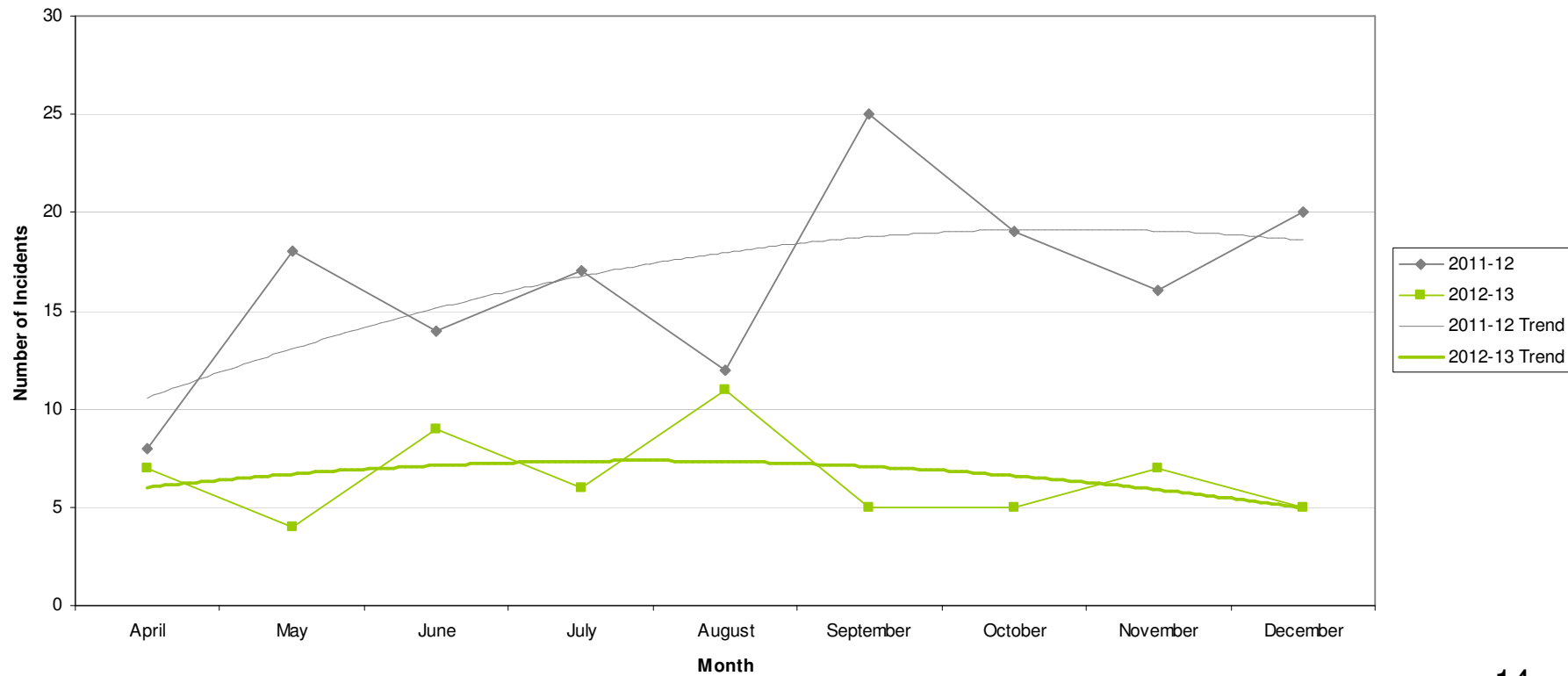


Fly Tipping

RED		
AMBER		
GREEN	5 incidents	Decrease of 15

- All data refers to a comparison with the previous year's month
- It is proposed that performance over time graphs be used for each indicator
- Historic data for comparison is not available for dog fouling

Incidents of Fly Tipping



Unemployment Rate

Area	Nov-12			Change in last		Change in last year	
	Number	Rate	City Rank	Number	%	Number	%
Berridge	1,030	7.1	7	-11	-1.1	67	7
Dunkirk and Lenton	253	2.3	19	-7	-2.7	-20	-7.3
Radford and Park	754	4	17	-14	-1.8	-13	-1.7
Sherwood	544	5.1	13	2	0.4	-66	-10.8
Wollaton East and Lenton Abbey	143	1.4	20	4	2.9	5	3.6
Wollaton West	248	2.7	18	-6	-2.4	10	4.2
Aspley	1,174	10.4	1	34	3	-13	-1.1
Basford	728	6.5	10	21	3	36	5.2
Bestwood	1,009	8.9	3	22	2.2	19	1.9
Bilborough	750	7.2	6	5	0.7	-25	-3.2
Bulwell	1,061	9.7	2	44	4.3	34	3.3
Bulwell Forest	410	4.5	15	-19	-4.4	-45	-9.9
Leen Valley	335	4.8	14	-18	-5.1	-11	-3.2
Bridge	696	6.6	9	-11	-1.6	-24	-3.3
Clifton North	378	4.3	16	-9	-2.3	-23	-5.7
Clifton South	524	6	12	17	3.4	11	2.1
Dales	863	7.4	5	-1	-0.1	22	2.6
Mapperley	703	6.3	11	1	0.1	-3	-0.4
St Ann's	1,195	8.7	4	-39	-3.2	8	0.7

This is an edited version of a report produced by: Geoff Oxendale, Information and Research Officer, Nottingham City Council

Housing

Clifton North Ward - Housing



Anti-social behaviour - Clifton (Clifton North Ward)

Indicator	Current Target	2010/11	2011/12	2012/13		
		Value	Value	Value	Status	Trend
% of ASB cases resolved - Clifton	97.6%	97.68%	96.98%	99.25%		
% of ASB cases resolved by first intervention - Clifton	75%	-	-	78.95%		n/a

Empty properties - Clifton North Ward

Indicator	Current Target	2010/11	2011/12	2012/13		
		Value	Value	Value	Status	Trend
Average void relet time for Clifton North Ward	26	15.75	19	25.38		
Lettable voids Clifton North Ward	-	3	6	11		
Empty properties awaiting decommission in Clifton North Ward	-	0	0	3		

Estate star ratings (from Tenant Service Inspectors)



Indicator	2010/11		2011/12		2012/13		
	Value	Status	Value	Status	Value	Status	Trend
Estate star rating - Clifton	3 Star		3 Star		3 Star		

Data prepared by Nottingham City Homes Performance Team







For more information please contact Tricia Quinn, Performance Review Manager on 0115 9157365 or Marcus Parton, Performance Review Officer 0115 915715

Housing

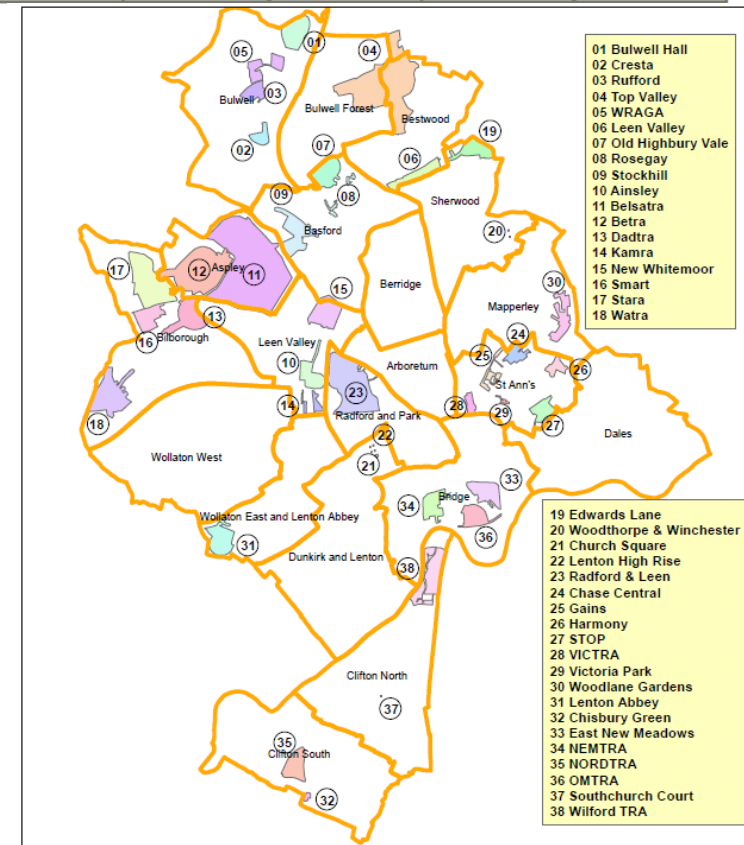
Rent Collection - Clifton

Indicator	Current Target	2010/11	2011/12	2012/13		
		Value	Value	Value	Status	Trend
Rent charged that has been collected - Clifton office area	100.2%	100.9%	101.4%	99.5%		

Key:

-  Performance on or exceeding target
-  Performance below target
-  Data only performance indicator
-  Performance has improved compared to two years ago
-  Performance has deteriorated compared to two years ago
-  Performance unchanged

Map of Tenants and Residents Associations by Ward



Data prepared by Nottingham City Homes Performance Team

For more information please contact Tricia Quinn, Performance Review Manager on 0115 9157365 or Marcus Parton, Performance Review Officer 0115 915715

Community Protection

In December 2012 there were four court outcomes in Clifton North. These comprised two cases of 'ASBO on conviction', an 'Injunction' and an 'Undertaking'.

Data has been received from Community Protection and where postcodes have been listed these have been geo-coded and mapped to determine the Ward. All addresses relate to the address of the Perpetrator.

FPNs are not currently available at ward level.

Fire

Table: Fire Rate (per 1000 of population) by ward (previous 12 months)

Ward	All Fire		Property		Secondary		Rank
	Volume	Rate	Volume	Rate	Volume	Rate	
Arboretum	14	1.21	5	0.43	9	0.77	13
Aspley	68	3.90	13	0.75	55	3.16	2
Basford	62	3.84	12	0.74	50	3.10	3
Berridge	44	2.23	19	0.96	25	1.27	10
Bestwood	44	2.58	13	0.76	31	1.82	7
Bilborough	46	2.75	13	0.78	33	1.97	6
Bridge	37	3.63	6	0.59	31	3.04	4
Bulwell	91	5.51	25	1.51	66	4.00	1
Bulwell Forest	43	3.13	12	0.87	31	2.26	5
Clifton North	15	1.15	4	0.31	11	0.84	16
Clifton South	19	1.36	6	0.43	13	0.93	12
Dales	19	1.18	10	0.62	9	0.56	15
Dunkirk and Lenton	11	0.91	5	0.41	6	0.50	18
Leen Valley	25	2.30	3	0.28	22	2.02	9
Mapperley	16	1.06	8	0.53	8	0.53	17
Radford and Park	30	1.48	11	0.54	19	0.94	11
Sherwood	18	1.19	3	0.20	15	1.00	14
St. Ann's	31	2.40	9	0.70	22	1.70	8
Wollaton East and Lenton Abbey	8	0.69	1	0.09	7	0.61	19
Wollaton West	5	0.34	0	0.00	5	0.34	20
Average Rate (of 20 Wards)	2.14		0.57		1.57		

Key:

	Highest
	Second Highest
	Third Highest

Clifton North ranks 16th highest out of the 20 wards for rate (per 1000 of population) of all intentional fire.

NB: Wards are ranked from 1 – 20 where 1 is the highest Rate and 20 is the lowest Rate.

Methodology

Data has not been audited or verified and therefore must only be used as a reflection of crime.

Where Crime and ASB is broken down to Ward level this data has been mapped, and using a polygon created for the *Council boundary* of the 'City Centre' this data has been removed where it has impacted on the Wards that crossed into it. Where figures for Rate of the population have been referred to, this has been taken into account for these calculations.

Where possible the most recent data is used, although for some areas this may be a month further in arrears.

Discussions continue with other agencies regarding what further data can be included.